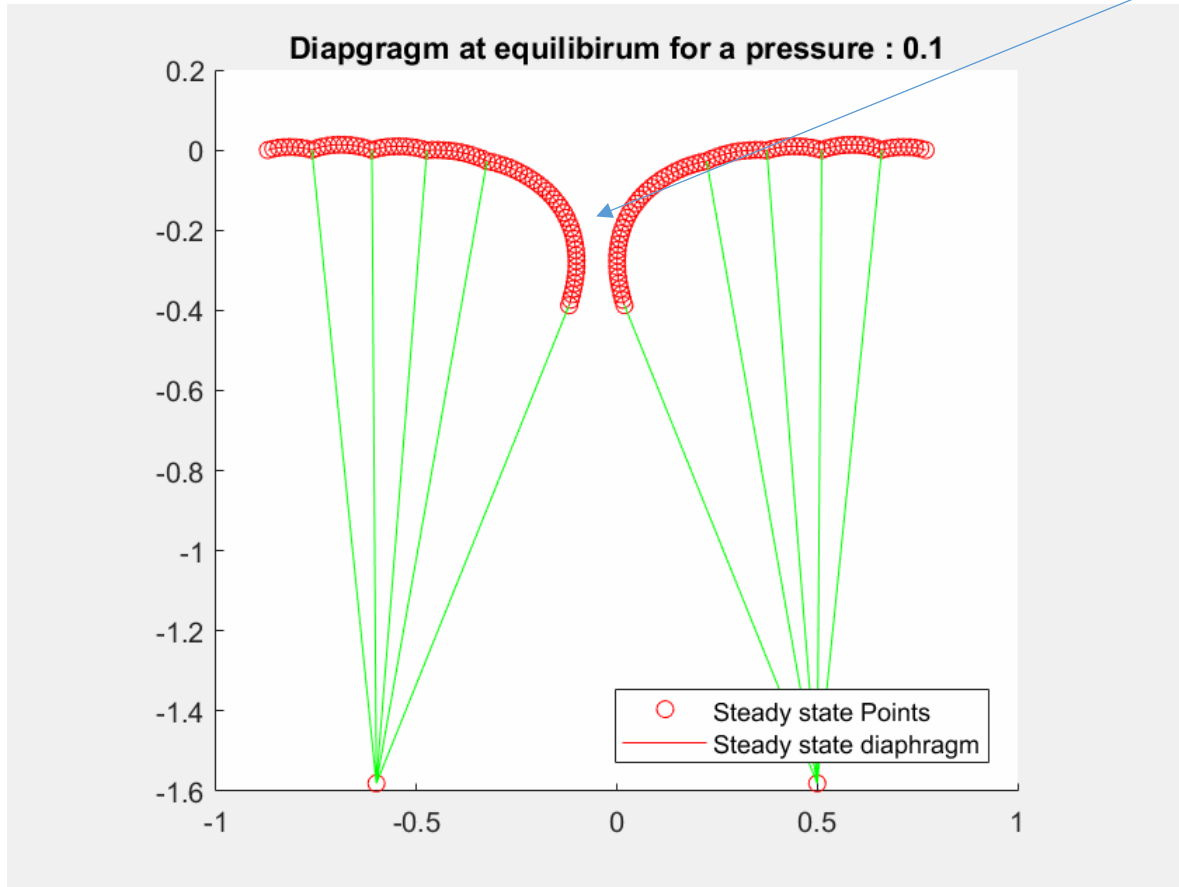


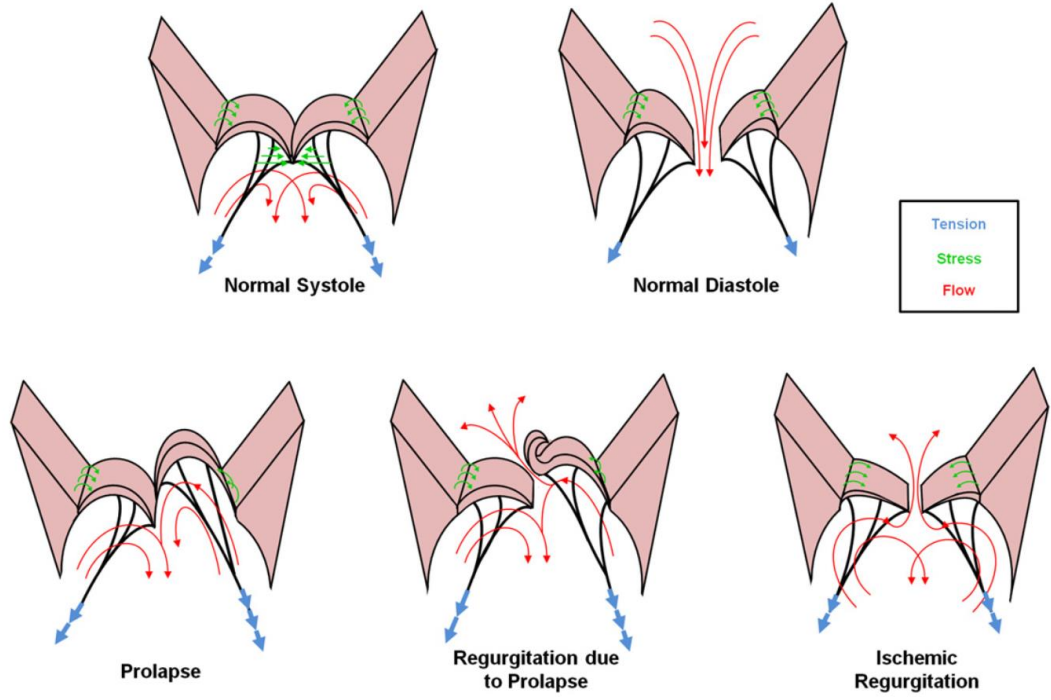
➔ Overview mechanical properties of Mitral Valve



<https://team.inria.fr/curative/talks/>

Localization of the sensor

Goal measuring the force of cooptation

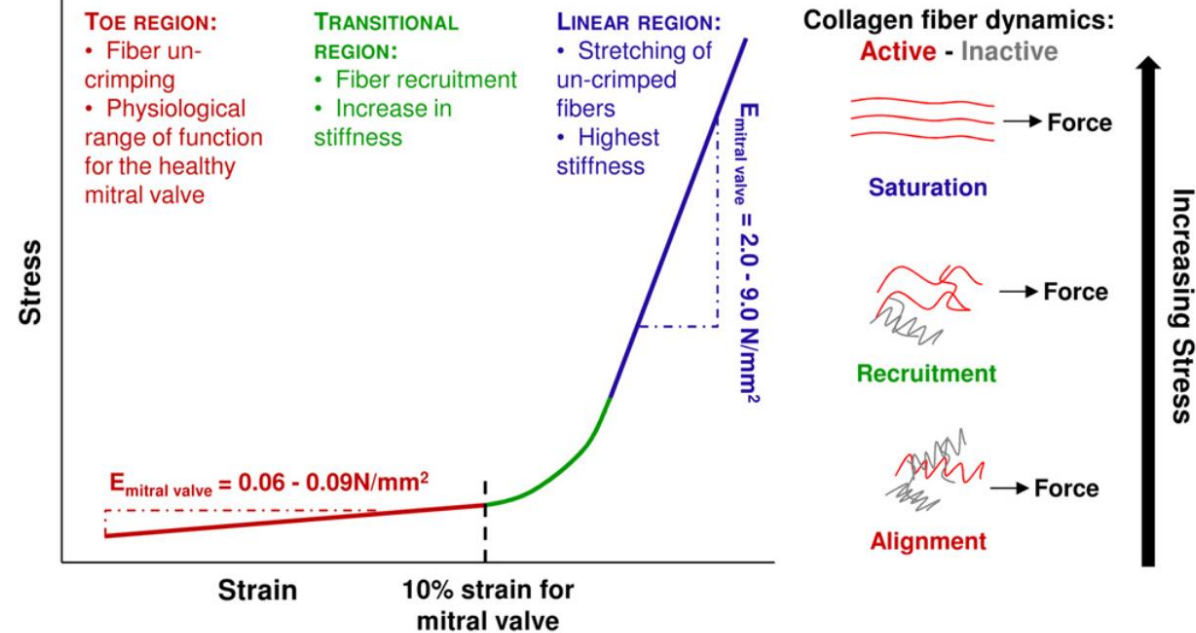
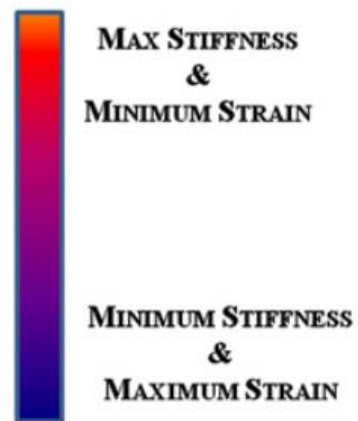
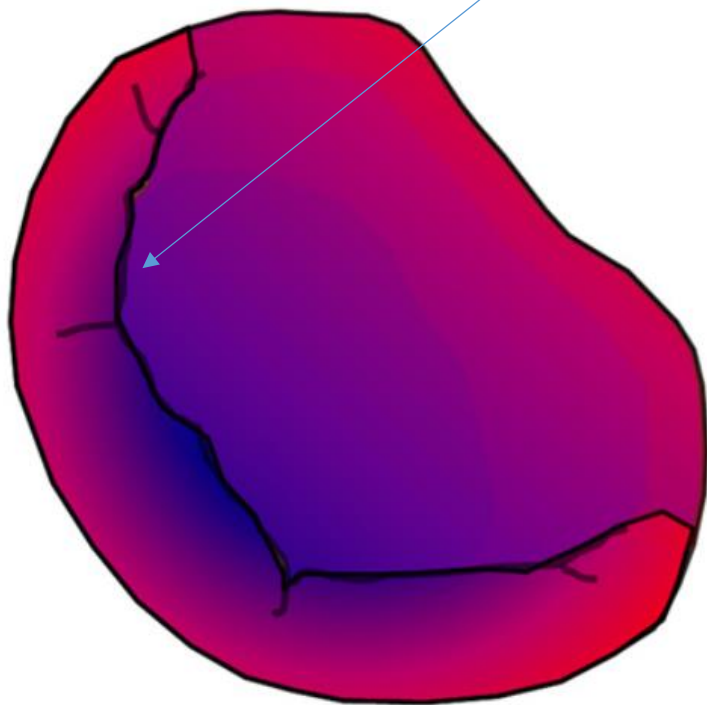


<https://www.sciencedirect.com/science/article/abs/pii/S1760273412000112>

➔ Overview mechanical properties of Mitral Valve

Localization of the sensor

Goal measuring the force of cooptation



<https://www.sciencedirect.com/science/article/abs/pii/S1760273412000112>

Typical Young modulus 0.06MPa to 9MPa

→ The device

